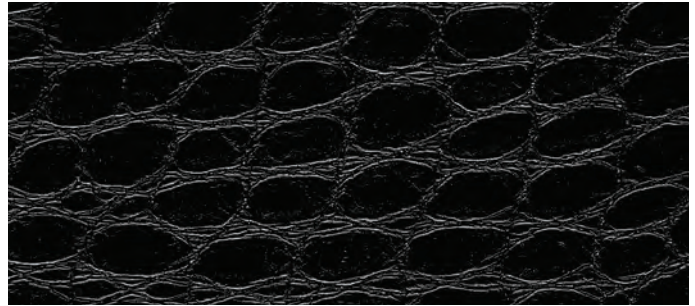
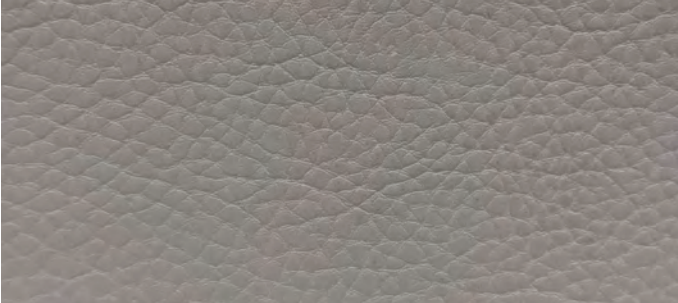


REM Fabric

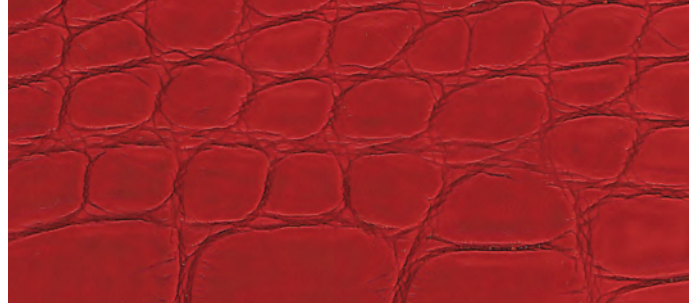




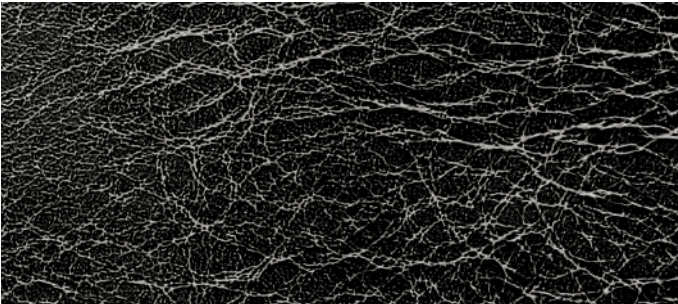
Black Iguana



Pebble



Red Iguana



Bison



Wolfskin

Hide is pictured not at actual size. To fully appreciate the scale and texture of this beautiful fabric, please request a sample online.



Aubergine



Meadow



Coco



Black



Flamingo



Pearl



Tangerine



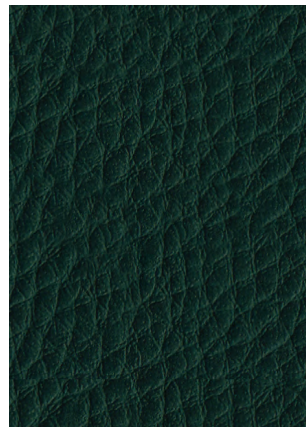
White



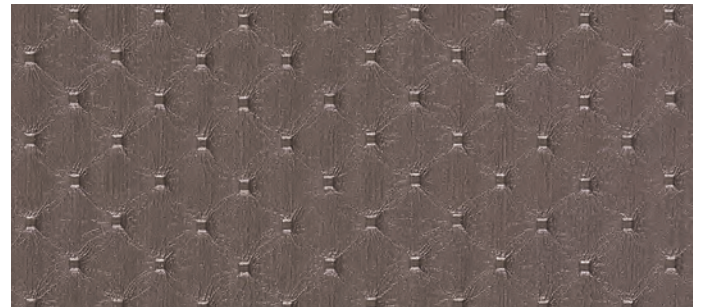
Persian Blue



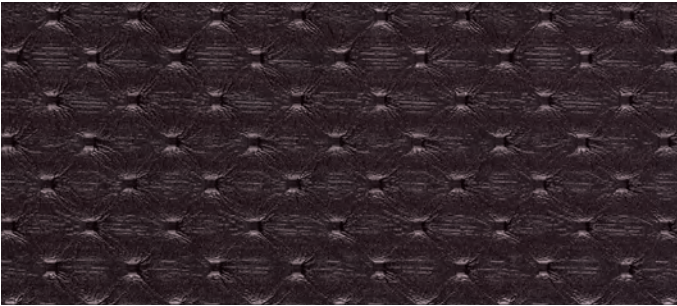
Strawberry



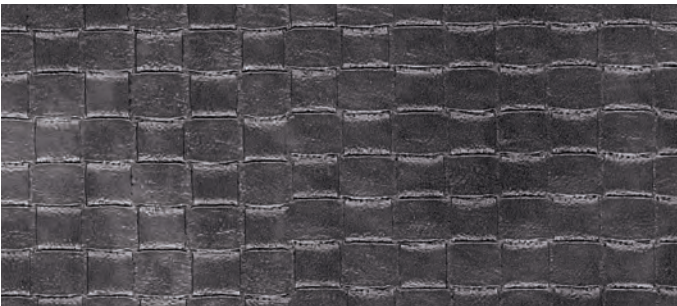
Fern



Truffle



Galaxy



Phantom



Rattan



Platin

See these REM colours
and many more inspiring
ideas online.

www.rem.co.uk
facebook.com/REMSalons
twitter@remuksalons

REM UK Limited
Glenfield Mill
Glenfield Road
Nelson Lancashire
BB9 8AW
England

Telephone
+44 (0)1282 619 977
Fax
+44 (0)1282 619 617

Online
sales@rem.co.uk
www.rem.co.uk

REM

Declaration of Conformity of Certain Fire Retardancy Standards

BS 7176 is the British Standard which specifies the requirements for the resistance to ignition of upholstered furniture manufactured for seating or similar usage, but excluding use on domestic furniture or transport seating. Tests have been carried out on all REM products and fabrics in accordance to BS EN 1021-1: 2006 and BS EN 1021-2: 2006 which satisfy the performance requirements of Low Hazard Category of BS 7176 (resistance to ignition sources: Smouldering Cigarette and Match Flame Equivalent). Typical examples of furniture that are required to meet the Low Hazard Category are Schools, Colleges, Offices, and Day Centres. All of the cloths in this swatch are available on the majority of REM products and meet the Medium Hazard Category (Public Buildings, Restaurants, Hotel Bedrooms, Hospitals etc) of BS 7176 which is similar to the above but also includes the Ignition Source 5 test of BS 5852: 2006.

It should be noted also, that whilst the test levels for the various hazard categories are set after careful consideration of the particular end-user environments involved, they are not intended to reflect the behaviour of the upholstery in a fully developed fire. A label is available for use on items produced in accordance with this standard, although there is no legal requirement to attach said label. These can be supplied on request at the time of ordering (printed to suit Low and Medium Hazard Only).

All products are subject to availability. REM reserves the right, without further notice, to alter the material specification of our products, if necessary to provide the highest levels of product quality.

© REM UK Limited 2015

REM Made in Britain

